

Moving Mountains

Description: Type II, W-101 (Fed. Spec. CCC-W-408A/D)
Digital Mural, 4 Panel Set (200" w x 120" h)

Weight: 20 oz.

Width: 52/54", trim to 50"

Content: 80% olefin composite, 20% post-industrial recycled olefin composite

Backing: Osnaburg

Installation: Non-reverse hang, straight match panels in sequence

Repeat: 200" H (applicable for multiple murals)

Flame Resistance: ASTM E84 Class A, CAN/ULC S102

Permeability: Specify microventing as an added feature for breathability

Surface Finish: For best results, the drywall should be finished to a level 5 prior to installation

Maintenance: Warm water, mild soap

Bleach Cleanable: 10:1 water to bleach solution

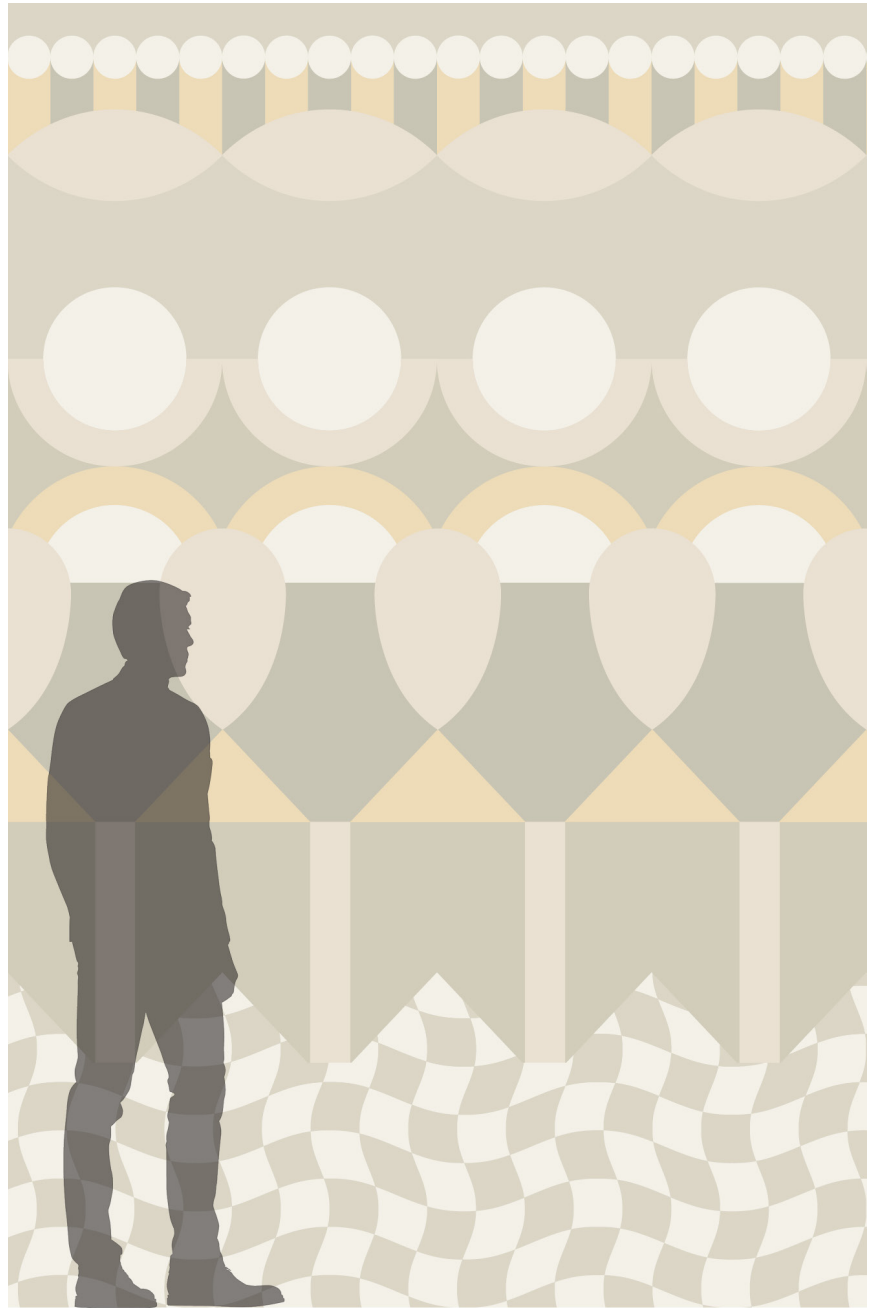
©2024

Visit momentumtextilesandwalls.com to view full pattern repeat and complete specs

PRODUCT USE ADVISORY This product is intended for use in buildings designed, monitored and regularly maintained to avoid moisture accumulation on or within walls, particularly in warm, humid climates. The features that make wallcovering cleanable and durable also render it low in permeability. Wallcovering should not be installed on walls that contain excessive moisture or are subject to moisture infiltration.

REDUCED ENVIRONMENTAL IMPACT:

- PVC free
- Phthalate free
- Prop 65
- GREENGUARD certified
- HPD
- Low-VOC CA Section 01350
- Recycled content
- Water-based inks



MCV-MM-02 Warm Affinity

YINKA ILORI

