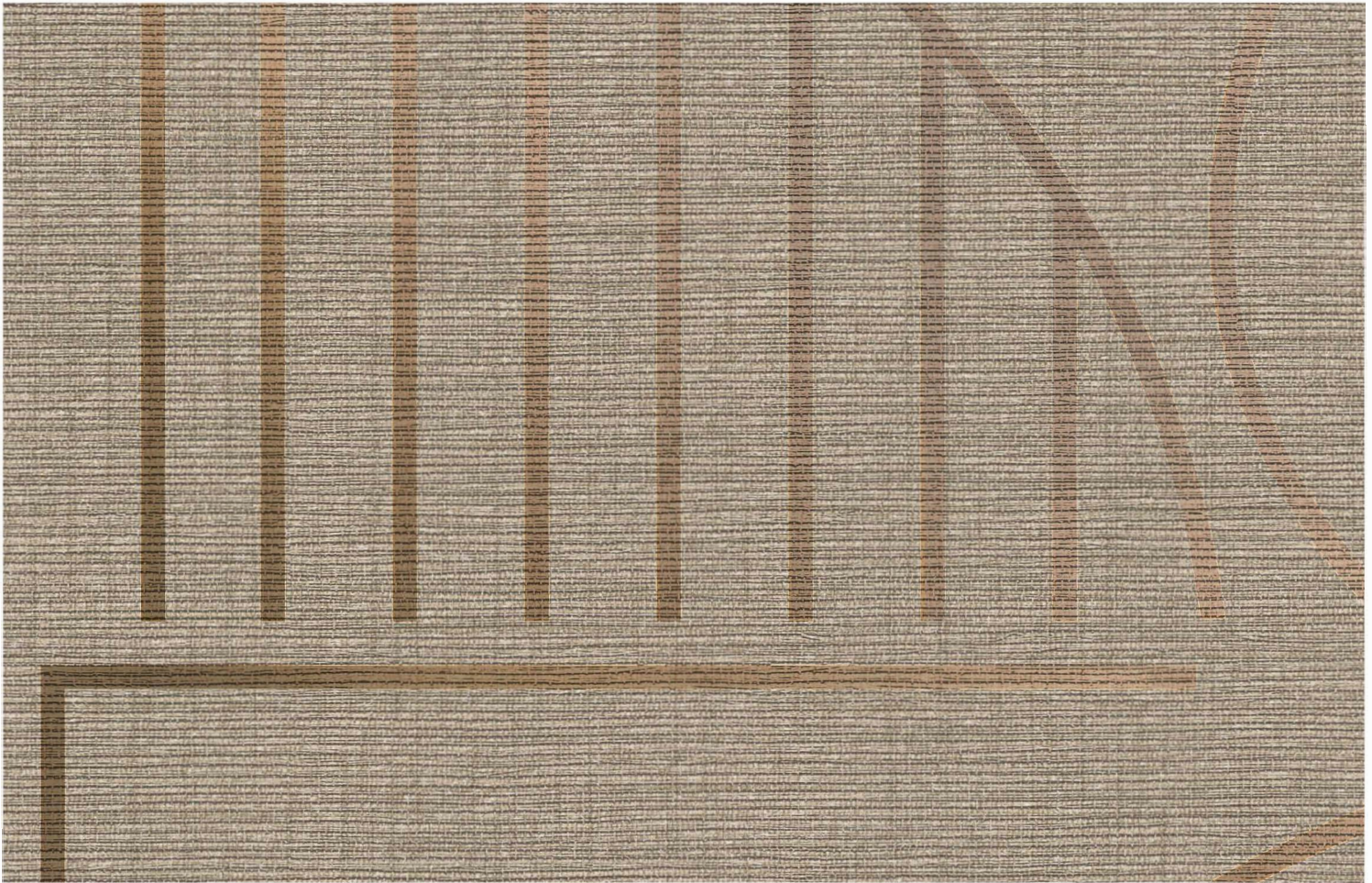


# Moondance Line-up

52" / Type II / 20 oz. LOW VOC RECYCLED CONTENT



**AZ53702MU** Irish Linen

## PHYSICAL PROPERTIES

**Weight:** 20 oz. PLY, 620 G/PLM 13.3 oz. PSY, 451 G/PSM

	Moondance Line-up	Moondance	Line-up
<b>Backing:</b>	Non-Woven	Osnaburg	Non-Woven
<b>Width:</b>	52"/ 132 cm	54"/137 cm	50"/ 127 cm
<b>Match:</b>	Straight Match	Reverse Random	Straight Match
<b>Repeat:</b>	24"H x 26"W		24"H x 25"W

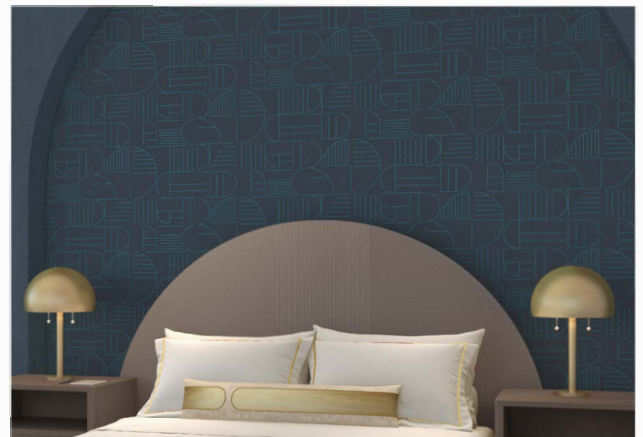
## Tested in accordance with CAN/ULC S102.2

Meets or exceeds Federal Specification CCC-W-408D for Type II Wallcovering  
Custom colours, weights, and micro venting available.

## ENVIRONMENTAL

- Low VOC, California section 01350 IAQ
- 10% Recycled content
- Non-Phthalate
- EPD/HPD
- California Prop 65, no labeling required

Product Specifications, Fire Safety & Ratings, Environment & Health and Warranty is available at [symphonywallcovering.com](http://symphonywallcovering.com)



 Render Ready Tiles available **AZ53697MU** In The Navy

## CLEANABILITY

Inherent anti-microbial protection  
Withstands hospital-grade cleaners & disinfectants  
Available as a custom with **INVISICAP** | complete **chemical** protection



**MOMENTUM**  
TEXTILES & WALLCOVERING

[memosamples.com](http://memosamples.com) | 800.366.6839