

Lithic Texture

VERSA
WALLCOVERING

Application: Wallcovering

Description: Type II, W-101 (Fed. Spec. CCC-W-408A/D)

Weight: 20 oz.

Width: 52/54"

Content: 80% olefin composite, 20% post-industrial recycled olefin composite

Backing: Osnaburg

Installation: Reverse hang, random match

Repeat: -

Flame Resistance: ASTM E84 Class A, CAN/ULC S102

Permeability: Specify microventing as an added feature for breathability

Maintenance: Warm water, mild soap

Bleach Cleanable: 10:1 solution

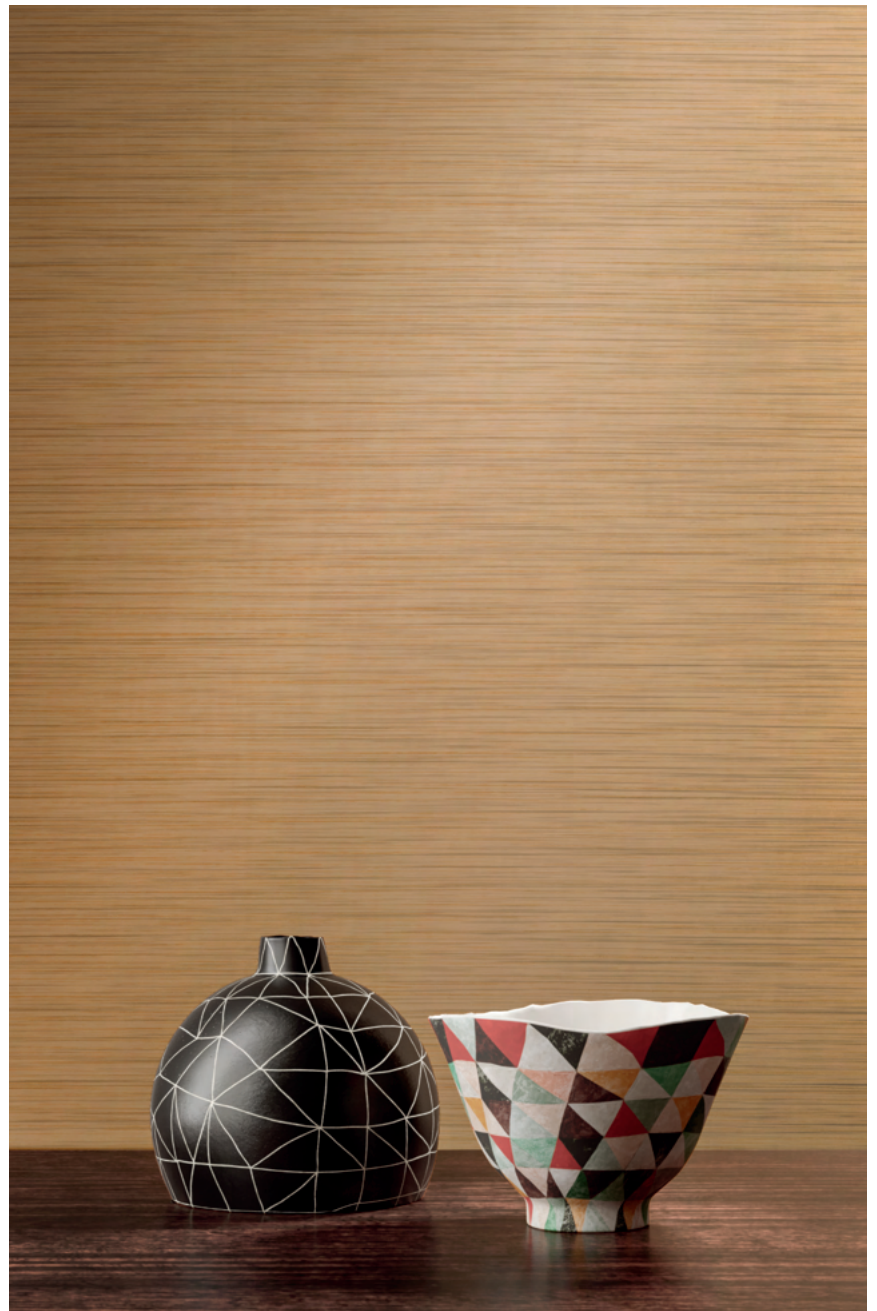
©2020

Visit memosamples.com to view full pattern repeat and complete specs

PRODUCT USE ADVISORY This product is intended for use in buildings designed, monitored and regularly maintained to avoid moisture accumulation on or within walls, particularly in warm, humid climates. The features that make wallcovering cleanable and durable also render it low in permeability. Wallcovering should not be installed on walls that contain excessive moisture or are subject to moisture infiltration.

REDUCED ENVIRONMENTAL IMPACT:

- PVC free
- Phthalate free
- Prop 65
- GREENGUARD certified
Low-VOC CA Section 01350
- HPD
- Recycled content
- Water-based inks



AVF11-615 Tawny



memosamples.com | 800.366.6839

MOMENTUM
TEXTILES & WALLCOVERING