

**PATTERN INFORMATION**

Type:	Type II
Width:	52/54 in (132.08/137.16 cm)
Weight:	20.0 oz per lineal yard
Backing:	Osnaburg
Installation:	Reversible match
Vertical Repeat:	2"
Horizontal Repeat:	4"
Custom Colors/Weights Available*:	Type I: 500 yard min. Type II: 400 yard min.
Minimum Custom Weight/Backing*:	Type I: 15.0 oz sheeting Type II: 20.0 oz osnaburg
Custom Microventing (Perforation) available*:	Contact distributor for minimums

\*Subject to Custom Production Overage %

**PATTERN SPECIFICATIONS**

	U.S.	Metric
Finished Total Weight:		
*19.5 oz per lineal yard	20.0 oz/ly	620 g/lm
*13.0 oz per square yard	13.3 oz/sq yd	452 g/sq m
Vinyl Weight:		
*7.0 oz per square yard	17.0 oz/ly	526 g/lm
Backing Fabric Weight:	3 oz/ly	93 g/lm
Tensile Breaking Strength:	Exceeds min. Type II specification	
*50 x 55 lbs – 222 x 245 N		
Tear Strength:	Exceeds min. Type II specification	
*25 x 25 Scale Reading		
Average Adhesion Vinyl to Fabric:	Exceeds min. Type II specification	
*3lb/in – 13.4 N/25mm		

\*Minimum specification requirement

**FIRE CLASSIFICATION: CLASS A – ASTM E-84**

Flame	20
Smoke	45
Passes ASTM E84	

**ENVIRONMENTAL**

Low VOC. Meets California Section 01350 Indoor Air Quality Standard
Can contribute to LEED® EQ 4.1 point for low-emitting materials, adhesives, and sealants if used with low VOC adhesives
Can contribute to LEED® MR 5.1 point for regional materials
Manufactured using comprehensive raw material recycling
Made with highly cleanable HAPs Free solvent based inks. Printing inks are 100% recycled
Contains no cadmium or mercury-based pigments. Pigments are fade and alkali-resistant

**OTHER FEATURES**

Made in the USA
GSA Fed. Spec. CCC-W-408D & W-101
Contains anti-microbial additives to resist the growth of mildew and bacteria and pass ASTM-G21. These additives will not prevent mold growth if residual wall moisture is in excess of 4% and/or is allowed to accumulate in or behind the walls. Perforation is available for enhanced permeability.

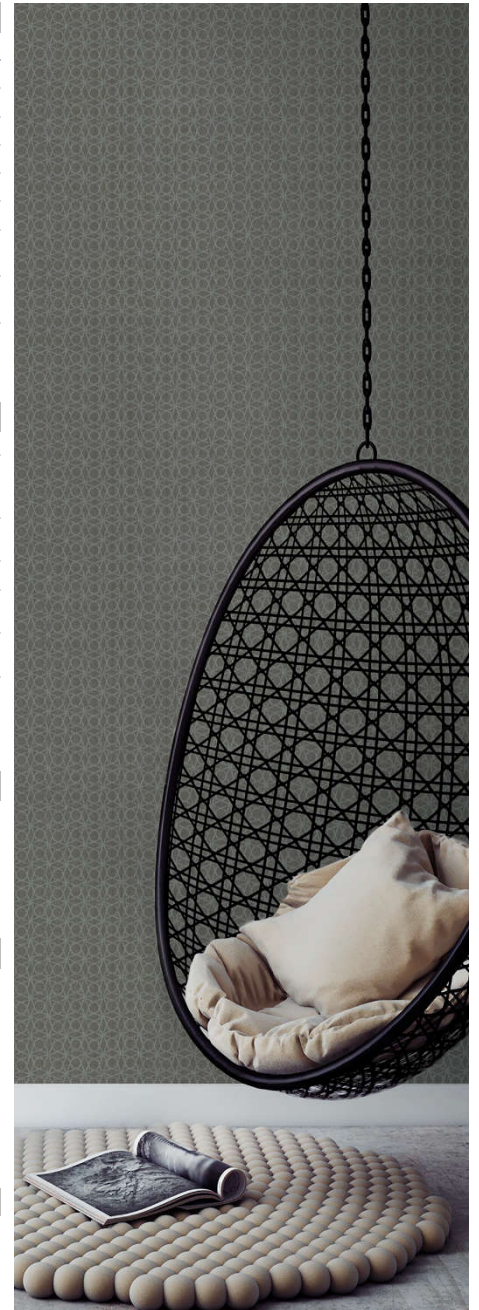
**PRODUCT USE ADVISORY**

This product is intended for use in buildings designed and maintained to avoid moisture accumulation on or within walls, particularly in warm, humid climates. The features that make vinyl wallcovering cleanable and durable also render it very low in permeability.

Vinyl wallcovering products should not be installed on walls that contain excessive moisture or are subject to moisture infiltration. If mold or mildew is present, or if walls show moisture damage or have excess moisture content, do not proceed with installation. Moisture infiltration and water vapor in and behind the wall must be eliminated for proper performance.

Processes that increase permeability, including microventing, should be considered for use under certain conditions in addition, the use of a mildew inhibitor in the primer and adhesive is highly recommended. Primers and adhesives with the highest possible permeability rating are also highly recommended.

After installation, the walls and wallcovering should be monitored for potential moisture or water vapor infiltration and accumulation. Any such infiltration or accumulation after installation must be promptly eliminated.



D.L.Couch

800 433 0790

*Eykon*

800 222 7866

tri|kes

800 200 8120