

PATTERN INFORMATION

Type:	Type II
Width:	52/54 in (132/137 cm)
Weight:	20.0 oz per lineal yard (452 g/sq m)
Backing:	Osnaburg
Installation:	Reversible pattern with a random match
Vertical Repeat:	Not applicable
Horizontal Repeat:	Not applicable
Custom Colors/Weights Available*:	Type I: 1,000 yard min. Type II: 1,000 yard min.
Minimum Custom Weight/Backing*:	Type I: 15oz scrim Type II: 20oz osnaburg
Custom Microventing (Perforation) available*: *Subject to Custom Production Coverage %	Contact distributor for minimums

PATTERN SPECIFICATIONS

	U.S.	Metric
Finished Total Weight: *19.5 oz per lineal yard *13.0 oz per square yard	20.0 oz/ly 13.3 oz/sq yd	620 g/lm 452 g/sq m
Vinyl Weight: *7.0 oz per square yard	17.0 oz/ly	526.0 g/lm
Backing Fabric Weight:	3.0 oz/ly	93.0 g/lm
Average Total Thickness:	.019 in	.483 mm
Tensile Breaking Strength: *50 x 55 lbs – 222 x 245 N	Exceeds min. Type II specification	
Tear Strength: *25 x 25 Scale Reading	Exceeds min. Type II specification	
Average Adhesion Vinyl to Fabric: *3lb/in – 13.4 N/25mm *Minimum specification requirement	Exceeds min. Type II specification	

FIRE CLASSIFICATION: CLASS A – ASTM E-84

Flame	5
Smoke	35

Passes NFPA 286 Corner Burn, NFPA 101 Life Safety Code & CAN/ULC S102-07

ENVIRONMENTAL

Meets California Section 01350 Indoor Air Quality Standard
 Can contribute to LEED® EQ 4.1 point for low-emitting materials, adhesives, and sealants if used with low VOC adhesives
 Can contribute to LEED® MR 5.1 point for regional materials
 Contains no cadmium or mercury-based pigments. Pigments are fade and alkali-resistant.

OTHER FEATURES

Made in the USA
 Contains anti-microbial additives to resist the growth of mildew and bacteria and pass ASTM-G21. These additives will not prevent mold growth if residual wall moisture is in excess of 4% and/or is allowed to accumulate in or behind the walls. Perforation is available for enhanced permeability.

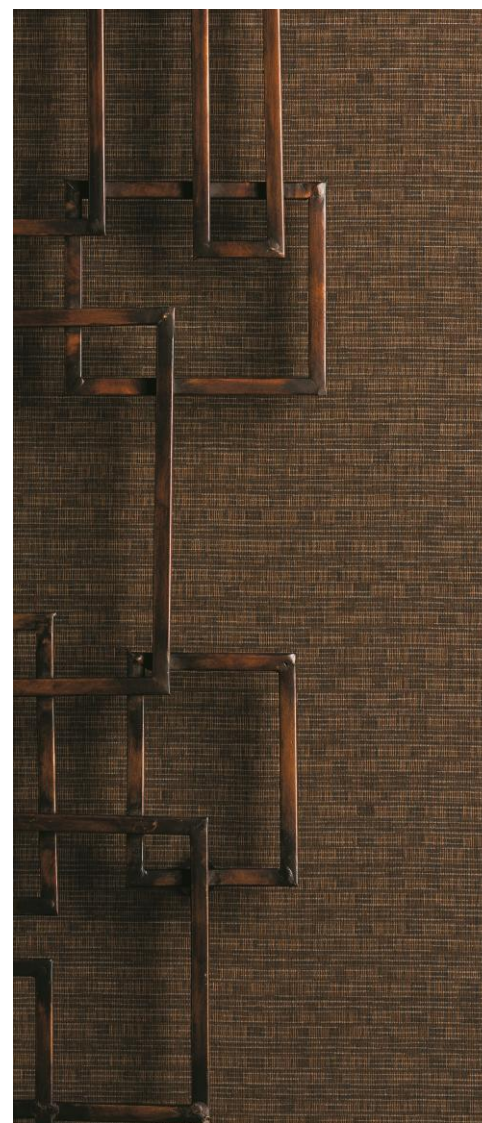
PRODUCT USE ADVISORY

This product is intended for use in buildings designed and maintained to avoid moisture accumulation on or within walls, particularly in warm, humid climates. The features that make vinyl wallcovering cleanable and durable also render it very low in permeability.

Vinyl wallcovering products should not be installed on walls that contain excessive moisture or are subject to moisture infiltration. If mold or mildew is present, or if walls show moisture damage or have excess moisture content, do not proceed with installation. Moisture infiltration and water vapor in and behind the wall must be eliminated for proper performance.

Processes that increase permeability, including microventing, should be considered for use under certain conditions in addition, the use of a mildew inhibitor in the primer and adhesive is highly recommended. Primers and adhesives with the highest possible permeability rating are also highly recommended.

After installation, the walls and wallcovering should be monitored for potential moisture or water vapor infiltration and accumulation. Any such infiltration or accumulation after installation must be promptly eliminated.



Lanark®
WALLCOVERING

LANARK.COM

D.L.Couch

800 433 0790

Eykon

800 222 7866

tr|ikes

800 200 8120